



# Capability Statement

**NOT JUST CIVIL.  
LEADING CIVIL.**



**Trust, reliability, accountability, and integrity form the backbone of each client relationship.**

## About Leading Group

Our highly skilled team delivers end-to-end civil, earthworks, excavation, and plumbing solutions at scale. Founded in 2010 by industry professional Peter Ados, we are proud to be 100% Australian-owned and operated.

Leading Group has grown into one of Victoria's most capable contractors, with the resources, plant, and people to deliver multi-million-dollar infrastructure projects. Our operations span full-scale earthworks, excavation, sewer, water and stormwater, construction of trunk mains, hydro excavation, drain cleaning, trenchless repairs and CCTV inspections.

Backed by ISO Safety, Quality, and Environmental Certification and accredited with all major water authorities, we are the trusted partner for tier-one contractors, developers, and government authorities. Our team combines industry-leading expertise with the scale, technology, and reliability to deliver projects of any size, safely and efficiently.

Proven across Victoria's largest civil, industrial, and authority-led infrastructure projects.

## Our Accreditations

- Yarra Valley Water
- South East Water
- Greater Western Water
- Barwon Water
- Melbourne Water

## Quality, Health, Safety, and the Environment

Leading Group sets the benchmark for major civil and infrastructure delivery. As a Triple ISO Certified contractor, we operate under a fully integrated management system that guarantees consistency, accountability, and excellence on every project - from multi-million-dollar subdivisions to authority-led infrastructure works.

- ISO 9001 – Quality Management
- ISO 45001 – Occupational Health & Safety
- ISO 14001 – Environmental Management



This framework ensures we deliver safely on time, and to the highest standard, while protecting our people, our clients, and the environment. It's why tier-one contractors, developers, and government authorities continue to trust Leading Group with Victoria's most complex projects.

## Mission



Leading Group is focused on delivering measurable returns for our partners while building a safe, valued, and rewarding environment for our workforce. We put

client relationships at the centre of everything we do, driving long-term partnerships through performance, accountability, and trust.

Our reputation is built on consistently delivering contracts to the highest standard - securing repeat business and ongoing commitments with tier-one contractors, developers, and government authorities across Victoria.



## Leading Solutions is dedicated to high-quality outcomes delivered safely and efficiently



## Leading Group Management Systems

The Leading Group Integrated Management System has been built to not only meet but exceed the strictest legislative, regulatory, and government standards for safety, quality, and environmental performance.

We operate with industry-leading project and asset management platforms designed for large-scale infrastructure delivery. Our cloud-based systems provide real-time data, transparent reporting, and instant accessibility - ensuring every project is controlled, traceable, and delivered to the highest standard.

This capability allows Leading Group to consistently deliver tier-one civil, earthworks, and infrastructure projects on budget, on schedule, and with unmatched accountability.

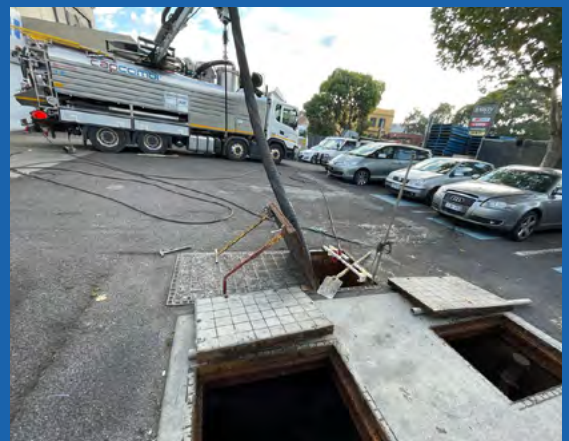
[leadingcivil.com.au](http://leadingcivil.com.au)

## Our Services

We provide complete civil construction, plumbing, and drainage project solutions as well as wet hire equipment services.



- High-powered stormwater and sewer pipe cleaning, jetting, and root cutting with full water recycling capability
- Gross Pollutant Trap (GPT) maintenance and cleaning to authority standards
- Cleaning of open water bodies, waterways, and bushland reserves
- Repairs and replacement of SQIDs (Stormwater Quality Improvement Devices)
- CCTV inspections and laser profiling with full pipeline condition assessments and reporting
- GPS and GIS-enabled technology for precision asset management
- Non-destructive vacuum excavation, trenching, and potholing
- Industrial vacuum loading for large-scale projects
- High-pressure water blasting for asset and surface cleaning
- Bulk liquid waste transportation with modern vacuum tankers
- Robotics and point-lining for advanced pipe rehabilitation
- Stormwater waste recycling and environmental waste management
- Quick-Lock Installation
- SmartLock & SmartPatch
- IBAK and IPEK CCTV Pipe Inspections in HD
- High Pressure Water Jetting (HPWJ)
- Underground Service Locating
- Confined space entry by fully trained and accredited crews
- 24/7 emergency response for flooding, environmental spills, and network failures



# Our Values



## Excellence

We seek to be exceptional in everything we do, with our skilled staff delivering the highest quality workmanship through every stage of our process. We demonstrate best practice in all areas of our responsibility and never compromise on well-being and safety.



## Loyalty

We pride ourselves on building and maintaining loyal relationships with our clients, suppliers, and our internal team. We work on-site in a truly collaborative manner and always treat others as we expect to be treated ourselves.



## Safety

Safety is fundamental to how we operate. Through experienced teams, proven systems, and proactive risk management, we maintain the highest safety standards across every project while protecting our people, clients, and communities and delivering work safely and efficiently.



## Local Procurement

We are committed to supporting the communities where we work by prioritising local procurement, engaging local suppliers, and creating employment opportunities. Through strong partnerships and local participation, we contribute to sustainable growth and long-term community outcomes.



## Hard Work

We pride ourselves on hard work and being true to our word, which means putting 100% effort into every job we undertake and doing what we say we will. We hold ourselves accountable for agreements and deadlines and value honesty and consistency in our actions and our words.



## Teamwork

Collaboration is the key to our success. We leverage the collective skill and expertise of our highly trained team for the best possible outcomes and provide all staff with quality training and resources to be a dependable part of our team.



## Leadership

We encourage our team to be the best they can be, empowering each team member to take initiative and motivate others, and to have the courage to create a better future.



# Contents

## LEADING CIVIL

Our Values.....	3
CCTV Inspections of Sewer and Stormwater Pipes.....	5
Drain cleaning.....	7
Non- Destructive digging - Hydro Excavation.....	8
Bulk Liquid Waste Collection, Transportation and Solutions.....	9
Underground Service Locating.....	10
Underground Service Locating Capabilities.....	11
Drainage Rehabilitation .....	12
CCTV Inspection .....	13
Drainage Rehabilitation Truck.....	14
Pipe Robotics.....	15
High Pressure Water Jetting (HPWJ) .....	17
Concrete Scanning.....	18



## CCTV Inspections of Sewer and Stormwater Pipes

Leading Group deploys the latest high-definition fibre-optic CCTV technology to inspect and assess sewer and stormwater pipelines with unmatched accuracy. Our systems allow clients to view live footage on-site and receive detailed post-inspection reports with photographs and digital recordings.

Our advanced equipment surveys pipelines up to 500 metres in length and diameters ranging from 150mm to 3000mm, with full confined-space capability for deep-pit and complex investigations.

Every inspection is delivered in compliance with the Sewer Inspection Reporting Code of Australia (WSA-05) and the SEWRAT Conduit Condition Evaluation Manual, ensuring reporting meets national authority standards.

By combining cutting-edge technology with experienced operators, Leading Group provides clients with clear, actionable insights and expert recommendations to support decision-making on asset management and rehabilitation

## Laser Profiling of Sewer and Stormwater Pipes

Leading Group delivers state-of-the-art laser profiling services to accurately measure and assess the condition of sewer and stormwater pipelines. This advanced technology provides a level of precision well beyond traditional CCTV inspections, giving clients the data needed to make informed decisions on asset management and renewal.

Laser profiling allows us to:

- Verify pipe walls and installations meet industry and authority standards
- Detect structural defects including deformation, ponding, and protrusions
- Measure wall thickness and corrosion in aging or high-risk pipelines
- Provide detailed analysis and reporting to support long-term maintenance and rehabilitation planning

By combining laser profiling with our CCTV inspection capabilities, Leading Group provides a comprehensive pipeline diagnostic service trusted by tier-one contractors, developers, and water authorities across Victoria.

## Drain Cleaning

Leading Civil operates some of the most powerful and advanced drain cleaning / jetting systems in Victoria, capable of clearing blockages including sand, dirt, roots, fats, and heavy debris with speed and precision. Our state-of-the-art combination trucks are fitted with specialised nozzles, chain flails, and root-cutting sleds to tackle even the most complex conditions. Equipped with large onboard water tanks, high-pressure jetting systems, and quick hydrant connections, our fleet ensures fast turnaround and maximum efficiency on every project.

Each unit carries up to 220 metres of hose, enabling access to the most difficult and distant jobs. Backed by highly experienced and accredited operators, Leading

Group provides a full scope of industrial cleaning and maintenance services, including:

- Sewer, stormwater, and culvert cleaning
- Removal of silt, fats, and debris
- Flood recovery and emergency response works
- Blockage and root intrusion removal
- Manhole and pit cleaning
- Reservoir and pump station cleaning
- Gross Pollutant Trap (GPT) cleaning
- Tank, vessel, and well cleaning

With our specialised fleet, accredited crews, and 24/7 response capability.



# Drain Cleaning

Leading Civil operates some of the most powerful and advanced drain cleaning / jetting systems in Victoria, capable of clearing blockages including sand, dirt, roots, fats, and heavy debris with speed and precision. Our state-of-the-art combination trucks are fitted with specialised nozzles, chain flails, and root-cutting sleds to tackle even the most complex conditions. Equipped with large onboard water tanks, high-pressure jetting systems, and quick hydrant connections, our fleet ensures fast turnaround and maximum efficiency on every project.

Each unit carries up to 220 metres of hose, enabling access to the most difficult and distant jobs. Backed by highly experienced and accredited operators, Leading

Group provides a full scope of industrial cleaning and maintenance services, including:

- Sewer, stormwater, and culvert cleaning
- Removal of silt, fats, and debris
- Flood recovery and emergency response works
- Blockage and root intrusion removal
- Manhole and pit cleaning
- Reservoir and pump station cleaning
- Gross Pollutant Trap (GPT) cleaning
- Tank, vessel, and well cleaning

With our specialised fleet, accredited crews, and 24/7 response capability.



## Non- Destructive digging – Hydro Excavation

Leading Civil Solutions faces challenges daily whilst working around services. In order to mitigate risk around striking services we use Non- destructive digging (NDD).

NDD uses high pressure water to break up and remove surface material and expose the desired asset or service. A high-flow vacuum extracts the dislodged and broken material. The material is then removed offsite to a proper disposal facility.

NDD can be used for:

- Confined space excavation
- Utility service repairs
- Mains or Service exposure
- Under Excavation
- Tight Space Works
- Exposing tree roots in TPZ
- Environmental protection



- Debris removal via suction
- Piling
- Trenching
- Potholing
- Hard/Cold Surface Excavation
- Remove Excavation



# Bulk Liquid Waste Collection, Transportation and Solutions

Leading Civil Solutions provides bulk liquid management (vacuum loading and transportation) for various on site bulk liquid wastes including but not limited to:

- Sludge and ground waters
- Drill and tunnelling slurry, bentonites and muds
- Effluents, septic/sewage
- Leachates
- Bilge water and bulkier wastes
- Contaminated ground / rain waters
- Concrete slurry

- Project / Construction site dewatering
- Triple interceptor pump outs
- Process waste tanks

The Leading Civil Solutions fleet of modern vacuum tankers range from 6,000L rigid trucks for use in the domestic market or small project, right up to 24,000L rear door opening semi tanker which service both medium to large civil construction projects or any drilling or tunnelling project where 'heavy and thick' slurries are involved.





## Underground Service Locating

At LCS, we deliver end-to-end underground service locating solutions tailored to infrastructure, civil, and construction projects. Our accredited team of specialists uses cutting-edge technology to detect, verify, and map underground assets with precision. From 2D overlays to fully interactive augmented reality, our data solutions are designed to provide a comprehensive visualisation of subsurface infrastructure.

Before any excavation, boring, or penetration works begin, it is essential to confirm the exact location of underground services to protect critical infrastructure and ensure the safety of site personnel. Service strikes can result in serious safety risks and significant financial consequences. Our team ensures accurate detection, clear documentation, and complete mapping of all utilities, reducing the risk of costly errors.



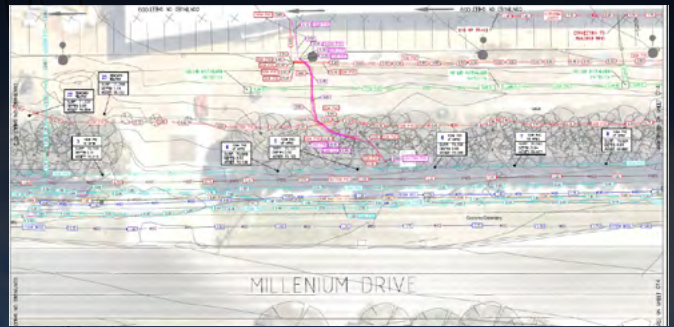
# Underground Service Locating Capabilities

## Project Utility Locating and Mapping

- Preliminary Underground Services identification
- Mapping of Assets in 3D for Information and Design
- Virtual Reality Model Creation for Real-time Site interaction
- Management of Non-Destructive Digging Process
- Borehole clearances for preliminary works

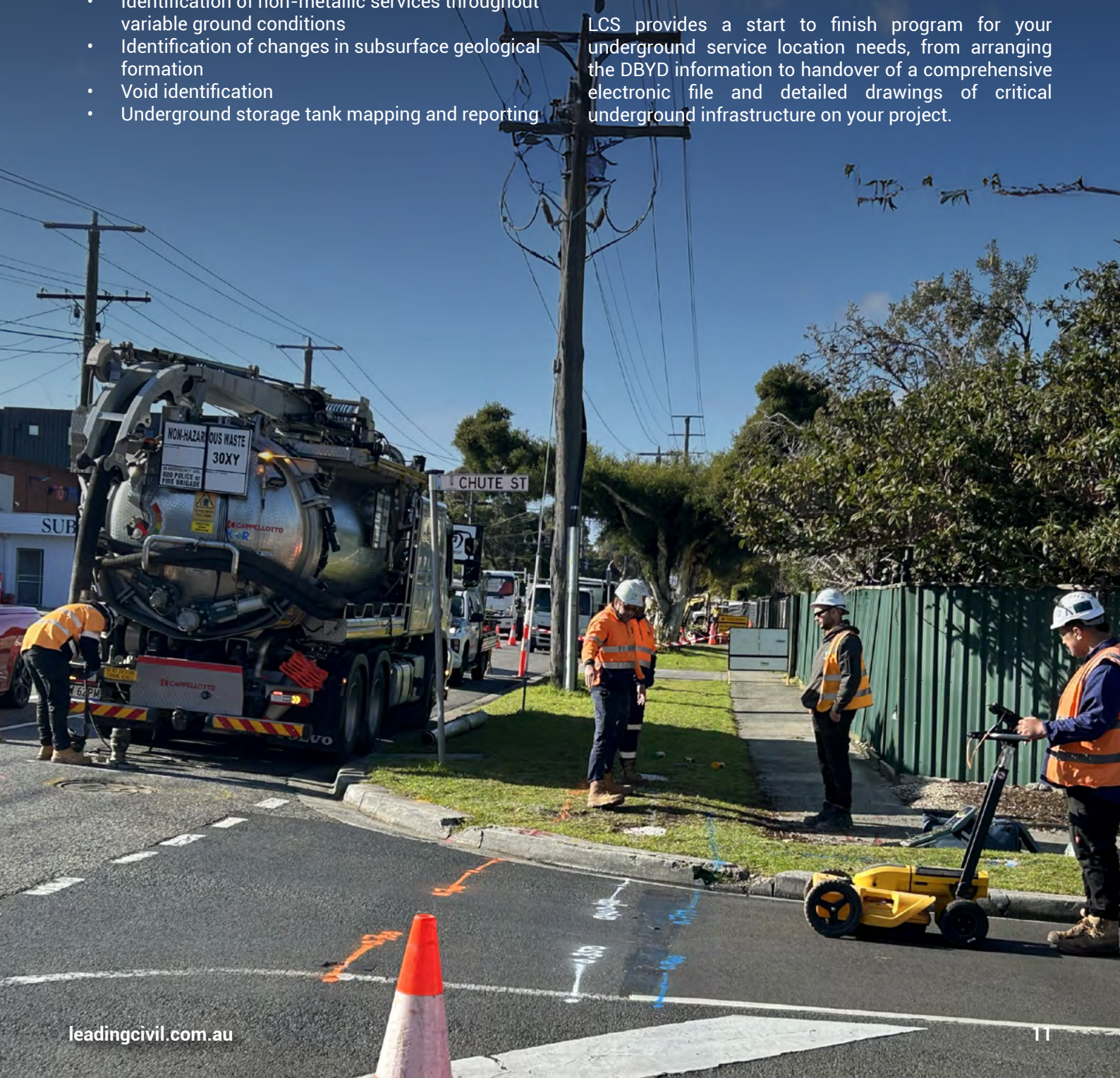
## GPR (Ground Penetrating Radar)

- GPR structural investigation of slab on ground footing extents
- Identification of non-metallic services throughout variable ground conditions
- Identification of changes in subsurface geological formation
- Void identification
- Underground storage tank mapping and reporting



Delivery of data is of extreme importance when it comes to GPR as it is now so much more than a recognise and mark process. Raw location data is processed in house and converted into any electronic format that is required.

LCS provides a start to finish program for your underground service location needs, from arranging the DBYD information to handover of a comprehensive electronic file and detailed drawings of critical underground infrastructure on your project.



# DRAINAGE REHABILITATION



## Quick-Lock Installation

We are fully equipped to install Quick-Lock sleeves and end seals (by UHRIG), which are mechanically locked stainless steel/EPDM cuffs designed for structural, trenchless repair of damaged pipe sections. These can be used in sewage, industrial, potable water, or pressure pipelines. No curing time, no resin, and minimal downtime. We use Quick-Lock to address holes, cracks, infiltration, misaligned or separated joints, blind laterals - 50-Year Warranty

## Smartlock & SmartPatch

For fast, structural point repairs or patches, we employ SmartLock and SmartPatch technologies. The SmartLock system uses a smooth-bore stainless steel sleeve encased in fiberglass mat, impregnated with silicate resin to deal with cracks, root intrusion, joint displacements and more. SmartPatch adds spot repairs where full pit to pit pipe relines aren't necessary. These systems are approved by authorities, use non-dig installation methods (inflatable packers, remote entry via manholes), and designed for long life, with fast installation times and minimal disruption.





## **IBAK & IPEK High-definition Pipe Inspections & CCTV Assessments**

We've upgraded our condition assessment tools. Our new IBAK CCTV system gives ultra-clear video of pipes of all materials and sizes, enabling early

detection of defect types, joint failures, root intrusion, and more. And when paired with our robotic cutters, we can mechanically cut up to 1000 mm diameter pipe defects, preparing the line for rehab work or removing obstructions cleanly and safely.



## Drainage Rehabilitation Truck

Fuso Specialised 4 x 4 Drainage Rehabilitation Truck Fully equipped with the latest high tech drain robotic units, trenchless drain rehab technology and high-definition CCTV crawlers. This all-terrain vehicle is ideal for deployment to easements and other inaccessible off-road areas.

### Applications

- Milling and cutting robot.
- UHP High water pressure cutting robot

- High-Definition drain cameras.
- Confined Space Entry equipped
- Pipe repairs to all types of pipes
- Large range of pneumatic rehabilitation patch packers for pipe repairs
- Smart Lock and Quick-Lock installation trolleys
- Laser profiling of new pipes.
- HD vehicle recovery winch
- Four Wheel Drive optioned



# PIPE ROBOTICS

## IBAK Micro Gator Air Milling Robot

New to our drainage rehabilitation services is our high-volume air milling and grinding robot.

Designed to remove unwanted obstructions and intrusions

### Applications

- Removal of rolled rubber gasket rings
- Steel reinforcement
- Large tap roots from invasive trees
- Removal of broken pipe pieces
- Grinding of pipe joints
- Removal of failed pipe liners
- Opening of pipe laterals



## IBAK Micro Gator UHP Ultra High-Water Pressure Robot

Another important addition to our robotic capability is the new pressure adjustable, to a max of 38,000 psi Ultra High Pressure water cutting robot. Ideal for the removal of partial or fully choked concrete deposits situated inside drainage pipes. The UHP unit is also effective on the removal of even the largest of tree roots, well beyond the capabilities of expensive hydro root saws and robotic milling cutter heads. Any tree root can now be quickly dispatched at its entry point and then removed. With surgical precision the UHP robot will remove pipe obstructions efficiently leaving the pipe ready for

immediate return to service. Up until now this has been an open-ended and costly process which now can be completed in a single day.

### Applications

- Concrete in sewer and stormwater pipes
- Grout in pipes
- Failed pipe liners removed
- Substantial tree root ingress trimmed and removed.
- Culvert cleaning.



## High Pressure Water Jetting (HPWJ)

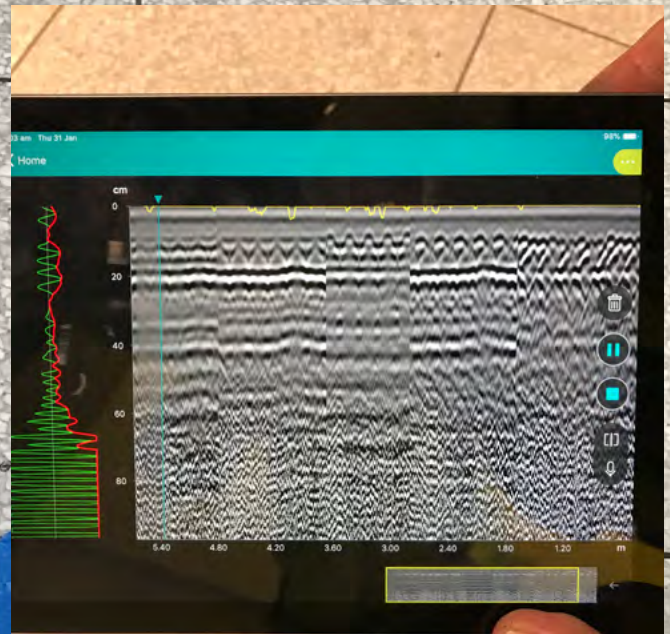
Leading Civil operates one of the most powerful High Pressure Water Jetting (HPWJ) systems available in Australia, powered by the latest IBAK technology. This unit delivers pressures up to 44,000 PSI – enough to cut through concrete intrusions, hardened deposits, grease, fats, and even steel-reinforced obstructions inside sewer and stormwater pipelines.

Our HPWJ system is fully integrated with our new IBAK MicroGator Air robotic cutters and HD CCTV inspection units, enabling precision cutting, cleaning, and rehabilitation of pipelines up to 1000 mm in diameter. With onboard HD cameras, laser measurement, and robotic guidance, we can target defects with millimetre accuracy, ensuring thorough cleaning and long-term performance of critical infrastructure.

This capability gives us a competitive edge in:

- Pipeline rehabilitation – removing concrete, roots, and debris before trenchless repairs (Quick-Lock, SmartLock, SmartPatch)
- Industrial cleaning – heavy-duty jetting of culverts, tanks, reservoirs, and industrial pipe networks
- Asset protection – restoring hydraulic capacity in pipelines while minimising excavation and surface disruption
- Authority-standard compliance – HPWJ solutions align with the requirements of Victoria's major water authorities and WSA codes

With this investment, Leading Civil is equipped to deliver tier-one level jetting, cutting, and cleaning services that very few contractors in Australia can match.



## Concrete Scanning

We can also provide our clients with fast and precise insights into the structure, strength and composition of their concrete structures using our concrete scanning expertise. We give structural engineers, building contractors and concrete specialists the essential information they require and service multi-national companies, engineering and construction specialist, local and state government bodies as well as residential and small business clients.

Concrete scanning is a cost-effective solution for your construction or engineering project. We are a trusted service provider using the latest technology in the industry. Utilising the latest GPR (Ground penetrating radar)/ concrete scanning technology to reduce the risk associated with trench cutting and core drilling. We are accredited with DBYD and Telstra to ensure we can minimize any risk associated with potential service strikes.

Whether we're assessing the strength of a slab to accommodate a great load at a warehouse or reporting on the impact of holes drilled for cathodic protection,

our concrete scanning specialists provide the critical information people need to make important decisions.

Much of the information produced by our technicians is acquired in real time, we are often able to provide on the spot information about where services, reinforcement and defects lie. Images and interpretations of them are provided in a timely manner and the process of acquiring the information is safe, non-destructive and can be done without significantly disrupting the space being scanned.

### Concrete Scanning Applications

- Detection of frequency and position of ligatures in structural beams.
- Column analysis for ligature position and depth.
- Non-Destructive testing for construction failure analysis.
- Reinforcing steel positioning prior to drilling/coring.
- Bridge Deck Analysis
- Construction quality assurance



**Built on Expertise, Driven by Safety,  
Delivered with Precision**

## The Leading Civil Difference







- Proven industry reputation with a strong track record
- Triple ISO accredited for safety, quality, and environmental management
- Modern, well-maintained fleet with in-house servicing to minimise downtime
- Highly experienced operators and accredited crews
- Zero accident history
- Specialist services across stormwater, sewer, drainage, and environmental assets
- 24/7 availability for emergency response
- Safe, compliant operations near utilities and sensitive environments
- Fully aligned with authority and quality assurance standards

## 24/7 Emergency Support

Our teams are available around the clock, equipped to respond to flooding, spills, blockages, and network failures. With Leading Civil, you can count on rapid, effective solutions that minimise disruption and safeguard critical infrastructure.

## Full-Service Capability

From pipeline cleaning and condition assessments to advanced rehabilitation, asset management, and environmental maintenance, we deliver complete solutions across civil and infrastructure projects. With cutting-edge technology and specialist crews, Leading Civil is built to handle the most complex challenges.

PROJECT	SCOPE OF WORK	CLIENT
 <p>Mordialloc Main Sewer Rehabilitation Project</p>	<ul style="list-style-type: none"> <li>• CCTV Condition Assessment,</li> <li>• Sewer Cleaning &amp; Confined Space Entry</li> <li>• Laser Profiling / Ovality Testing</li> <li>• Service Locating &amp; Service Proving (NDD)</li> <li>• Flow Control &amp; Bypass Pumping</li> </ul>	Safety Focused Performance Joint Venture (SFP JV)
 <p>Northern Hypo Storage Facility Project</p>	<ul style="list-style-type: none"> <li>• Service Locating &amp; Service Proving</li> <li>• Non-Destructive Digging (NDD) / Hydro Excavation</li> <li>• Pothole Reinstatement</li> </ul>	BFHI JV
 <p>Lactalis - Rowville Site</p>	<ul style="list-style-type: none"> <li>• Trade Waste pH Buffer Tank Cleaning, Fat Removal &amp; Disinfection</li> <li>• Vacuum Loading &amp; Waste Transportation</li> <li>• Waste Disposal</li> </ul>	Lactalis
 <p>Station Street, Beaconsfield Level Crossing Removal Project.</p>	<ul style="list-style-type: none"> <li>• Hydro Excavation</li> <li>• Non-Destructive Digging</li> <li>• Service Proving</li> </ul>	Fulton Hogan LGRP – MRPA.
 <p>Craigburn Road Upgrade Project.</p>	<ul style="list-style-type: none"> <li>• Drain Cleaning, CCTV Condition Assessment &amp; Agi Pipe Inspections.</li> </ul>	Fulton Hogan – MRPV.
 <p>Suburban Rail Loop Project - (SRL).</p>	<ul style="list-style-type: none"> <li>• Sewer Cleaning, CCTV Condition Assessment and Laser Profiling / Ovality Testing.</li> </ul>	Delcon Civil.

### Contact

Leading Group (VIC)  
P. 1300 194 273  
E: [info@leadingcivil.com.au](mailto:info@leadingcivil.com.au)  
W: [leadingcivil.com.au](http://leadingcivil.com.au)

### DEPOTS

**Operations Depot**  
44 Jellico Drive  
Scoresby VIC. 3179

**Campbellfield Depot**  
7 Freeman Street  
Campbellfield VIC. 3061

