


LEADING

   SOLUTIONS



Capability Overview

Experienced Leaders within the Civil Construction, Excavation and Plumbing Industry.

 Leading Civil Solutions

 Leading Excavation Solutions

 Leading Plumbing Solutions





Trust, reliability, accountability, and integrity form the backbone of each client relationship.

About Leading Solutions

Our highly-skilled team provides specialist plumbing and drainage services. Founded in 2010 by industry professional, Peter Ados, we are proud to be 100% Australian-owned and operated.

Peter had a vision: to deliver excellent civil and drainage solutions with the best team he could find. We now have a strong team of licensed and registered plumbers including multiple sewer, water and drainage crews, an industrial team, project engineers and project management teams.

Our team are leading industry professionals who perform at international operating standards. We specialise in sewer, water and drainage subdivisions and trunk mains, water along with other infrastructure works. We also provide hydro excavation, drain cleaning, and CCTV services. We are accredited with all major water authorities and have Safety, Quality and Environmental Certification. Our commitment to excellence, and focus on safety, means we've become the preferred contractor for civil and plumbing contracts across Victoria.

Experienced across major civil, industrial and water authority projects.

Quality, Health, Safety, and the Environment

Leading Solutions is dedicated to high-quality outcomes delivered safely and efficiently. We are ISO accredited and possess an integrated management system that is compliant with:

- Quality Management to ISO 9001
- OHS Management System to ISO 4801
- Environmental Management to ISO 14001



Our Accreditations

- Yarra Valley Water
- South East Water
- Greater Western Water
- Barwon Water
- Melbourne Water

Mission



Leading Solutions continues to provide a return on investment for our partners, whilst creating a safe, valued and rewarding environment for our workforce. Our client relationships are at the forefront of all our activities, and we have solid ongoing commitments as a result of delivering on our contracts.



Leading Solutions is dedicated to high-quality outcomes delivered safely and efficiently



Leading Solutions Management Systems

The Leading Solutions management system has been developed over time to meet and exceed client's legislative and government standards for safety, quality and environmental aspects and impacts.

Leading Solutions uses industry specific project and asset management software to ensure that all projects are serviced to the highest level and completed on budget and on time.

Our software systems are efficient and cloud-based to ensure quick updates and complete data accessibility.

leadingplumbing.com.au

Our Services

We provide complete civil construction, plumbing, and drainage project solutions as well as wet hire equipment services.



- Stormwater & Sewer Pipe cleaning Jetting/Root Cutting with water recycling capabilities
- Gross Pollutant Trap Maintenance/Cleaning
- Cleaning of open water bodies, water ways and bushland reserves
- Repairs and replacement of SQIDs
- CCTV & Laser profiling Pipeline Inspections & Condition Assessments Reporting
- GPS and GIS Capabilities
- Non-Destructive Vacuum Excavation/Trenching/Potholing
- Industrial Vacuum Loading
- High Pressure Water Blasting
- Liquid Waste Transportation
- Robotics and Point-Lining in Pipe Repair
- Stormwater Waste Recycling and Waste Management
- Confined Space Entry
- 24/7 Emergency Response for Flooding/ Environmental Spill



- Site cuts
- Basement packages
- Trenching work
- Retaining walls
- Piling works
- Deep excavation
- Sewer & drainage trenching
- Detailed excavation
- Bulk earth works



- Sewer greenfields subdivisions and brownfields sites
- Water greenfields subdivisions and brownfields sites
- Storm water greenfields subdivisions and brownfields sites and trunk mains
- Sewer Rising Mains
- Sewer Pumping Stations
- Gravity Sewer pipelines
- Water transmission mains
- Water treatment plants
- Live sewer operations and confined space entry
- Rehabilitation works for sewer and water
- Maintenance holes (In situ and Precast)
- Medium density plumbing greenfield subdivisions for sewer, water, stormwater & gas



Our Values



Excellence

We seek to be exceptional in everything we do, with our skilled staff delivering the highest quality workmanship through every stage of our process. We demonstrate best practice in all areas of our responsibility and never compromise on well-being and safety.



Hard Work

We pride ourselves on hard work and being true to our word, which means putting 100% effort into every job we undertake and doing what we say we will. We hold ourselves accountable for agreements and deadlines and value honesty and consistency in our actions and our words.



Teamwork

Collaboration is the key to our success. We leverage the collective skill and expertise of our highly trained team for the best possible outcomes and provide all staff with quality training and resources to be a dependable part of our team.



Leadership

We encourage our team to be the best they can be, empowering each team member to take initiative and motivate others, and to have the courage to create a better future.



Loyalty

We pride ourselves on building and maintaining loyal relationships with our clients, suppliers, and our internal team. We work on-site in a truly collaborative manner and always treat others as we expect to be treated ourselves.

Contents

LEADING CIVIL SOLUTIONS

- CCTV & Laser profiling Pipeline Inspections & Condition Assessments Reporting..... 6
- Stormwater & Sewer Pipe cleaning Jetting / Root Cutting with water recycling capabilities..... 7
- Gross Pollutant Trap Maintenance / Cleaning..... 7
- Cleaning of open water bodies, water ways and bushland reserves..... 7
- High Pressure Water Blasting..... 7
- Non-Destructive Vacuum Excavation / Trenching/Potholing..... 8
- Liquid Waste Transportation with Liquid Tanker..... 8
- Trenchless Repairs / Pipeline Rehabilitation..... 9

LEADING EXCAVATIONS SOLUTIONS

- Plant hire..... 10

LEADING PLUMBING SOLUTIONS

- Sewer Infrastructure..... 12
- Water Infrastructure..... 13
- Stormwater infrastructure..... 15
- Civil Plumbing (Medium density projects)..... 15



CCTV & Laser profiling Pipeline Inspections & Condition Assessments Reporting



CCTV Inspections of Sewer and Stormwater Pipes

Leading Civil Solutions uses the latest fibre-optic video technology to find the root cause of any stormwater or sewer piping issues. This technology uses fibre-optic cameras to provide footage that clients can view live on-site as well as revisit the footage afterward, providing timely and detailed inspection reporting.

We provide photographs of each stage of the inspection as well as the mp4 recording which our clients can view on a DVD or USB. The CCTV systems that we use can survey pipes for up to 200 meters and can access pipes that are between 150mm to 1800mm in diameter. Our investigative CCTV service also has confined space equipment to enable us to walk-through an issue or perform deep-pit investigations.

All Leading Civil Solutions inspection reports are fully compliant with the Sewer Inspection Reporting Code of Australia WSA-05-2008, WSA-05-2006 and the SEWRAT Australian Conduit Condition Evaluation Manual. Once we have completed the CCTV investigation, we will provide clients with expert advice on the best solution.



Laser Profiling of Sewer and Stormwater Pipes

Leading Civil Solutions provides laser profiling services to our clients. We can complete a continuous CCTV survey on pipelines, structures and up to 500 lineal metres with specialised survey equipment.

Laser profiling is an extension to our CCTV services but does not replace the traditional CCTV Pipeline inspection. The utilisation of laser profiling can provide

- Proof soft wall pipes meets industry standards
- Provide accuracy of the thickness of the remaining pipe walls with older concrete pipes with corrosion
- Calculate a measurement for any deformation in stormwater brick drains
- Measure the size of any other pipe defects including water ponding, holes, protrusions
- Provide comprehensive report to assist clients make decisions on future storm water and sewer maintenance programs

Drain cleaning

Leading Civil Solutions have one of the most powerful and efficient hydro jet systems in Melbourne, capable of clearing a wide range of blockages including sand, dirt, roots, and debris.

Our combination truck effortlessly cleans pipes from 200mm – 2200mm. The centralizer fins on our warthog nozzles are streamlined to allow the rear facing jets to be angled more sharply, giving the tool more forward thrust. The result is more pulling power to handle longer lines and moderate inclines. We also hold numerous nozzles including chain flails and sleds for complex root cutting.

All Leading Civil Solutions units also feature quick connections to hydrants for large diameter water supply for our onboard tanks, ensuring fast and efficient clearing practices.

The Leading Civil Solutions trucks are state of the art and available for clearing blockages, general cleaning or root cutting of sewers, storm water drains and pits. Our vehicles are equipped with 220m of hose to make even the most distant job easy.

We have experienced, accredited operators for all industrial cleaning, sewer, drain, and culvert clearing and cleaning purposes, including:

- Cleaning sewer pipes, stormwater drains and culverts
- Drain cleaning of silt, debris, and fats
- Flood recovery works
- Clearing of blockages and root removal
- Manhole and pit cleaning
- Reservoir and pump station cleaning
- Gross pollutant trap cleaning
- Tank, well and vessel cleaning



Non- Destructive digging - Hydro Excavation

Leading Civil Solutions faces challenges daily whilst working around services. In order to mitigate risk around striking services we use Non- destructive digging (NDD).

NDD uses high pressure water to break up and remove surface material and expose the desired asset or service. A high-flow vacuum extracts the dislodged and broken material. The material is then removed offsite to a proper disposal facility.

NDD can be used for

- Confined space excavation
- Utility service repairs
- Mains or Service exposure
- Under Excavation
- Tight Space Works
- Exposing tree roots in TPZ
- Environmental protection
- Debris removal via suction
- Piling
- Trenching
- Potholing
- Hard/Cold Surface Excavation
- Remove Excavation



Liquid Waste Transportation with Liquid Tanker

Leading Civil Solutions provides bulk liquid management to our clients. We provide this service for various liquid wastes including, but not limited to:

- Grease and oil interceptors
- Oily sludge and waters
- Concrete slurry
- Effluents, septic/sewage
- Hydrocarbon sludge
- Acid sulphates
- Leachates
- Biological wastes
- Contaminated waters
- Bilge water and bulker wastes

Available modern vacuum tankers range from 2,000L truck for use in the domestic market, right up to 40,000L tankers for larger projects.





Trenchless Repairs / Pipeline Rehabilitation

Leading Civil Solutions are certified installation partners of Quick-Lock Australia. The Quick-Lock system is made of stainless steel sleeves, which are surrounded by a seamless EDPM rubber compression gasket.

Each Sleeve has integrated ratchet mechanisms that allow them to first be rolled tight to fit inside the pipe being repaired, and then to be expanded to the optimal pressure with the Quick-Lock packer, at which point the ratchet locks the sleeve in place.

The specially developed, pneumatically operated packers are selected depending on the sleeve size and are positioned at the damaged section using a modified CCTV system.

Applications

The Quick-Lock system is suitable for repairing most common forms of damage found in sewer networks, such as:

- Water infiltration/exfiltration.
- Water infiltration at displaced joints.
- Root intrusion / infiltration.
- Closing dormant or unused inflows.
- Overcoming joint displacement.
- Suitable for use in horizontal or vertical sections of pipe.
- Cracked, fragmented, or deformed pipes; longitudinal, cross-sectional, and radial cracks.
- Repairs of well piping, possible even under water.
- Available as a perforated sleeve for drainage lines and filter piping rehabilitation.
- Repairs of pressure piping possible up to 10 bar/145psi.

Operational Performance

- Manufactured from the tried, tested, quality materials of V4A stainless steel and EDPM rubber gaskets, ensuring a high life expectancy and durability, corrosion, and heat resistance.
- Installed correctly, Quick-Lock sleeved sections reach standards set out for newly installed pipe systems.
- The completely mechanical Quick-Lock system ensures no chemicals, resins or glues are required and is therefore suitable for use in all forms of pipes/surfaces, even drinking/potable water pipes.
- Quick-Lock sleeves are available in lengths of: 400mm (DN 150 – DN 400); 500mm (DN 450 – DN 800)
- Quick-Lock sleeves can be overlapped to cover longer sections of damaged pipe.

Maintenance

The Quick-Lock system has been designed and developed using the feedback of installation partners, and the basic principles of:

- Easy installation
- Little or no preparation required
- Minimal risk of mistakes

Quick-Lock sleeves create a structural point repair, with minimal cross-sectional area loss, allowing for the continuation of standard maintenance such as high-pressure cleaning and root removal, even with the most aggressive equipment.



Our Services

Leading Excavation Solutions provide a broad range of plant & equipment. We specialise in the civil and earth moving industry and can supply the most appropriate plant and equipment for your project needs.

Our Equipment

We provide trusted contract services and equipment hire solutions. We have an extensive fleet of new equipment and the capacity to work around the clock based on project requirements. We can work 24 hours a day and 7 days a week to meet tight project deadlines.



With a large quality fleet and flexible working schedule, we can meet all your project needs.



Plant hire

Leading Excavation Solutions provide a broad range of plant & equipment, in impeccable condition, meeting Australian safety standards with up-to-date risk assessments. Our operators are highly skilled, reliable & experienced in all aspects of bulk & detailed excavation works.

Our equipment is equipped with GPS to ensure project accuracy.

EQUIPMENT	SIZE
Excavators	65 Tonne
Excavators	50 Tonne
Excavators	45 Tonne
Excavators	40 Tonne
Excavators	35 Tonne
Excavators	30 Tonne
Excavators	25 Tonne
Excavators	20 Tonne
Excavators	14 Tonne
Excavators	5 Tonne
Excavators	3 Tonne
Wheel Loaders	
Dump Trucks	30-40 Tonne
Dozers	
Graders	
Rollers	



Sewer infrastructure

At Leading Plumbing Solutions we specialise in installation of sewer infrastructure for greenfields and brownfields sites. Our skilled team are both trained and certified in all types of sewer systems.

Our team are renowned for being focussed, a great team to have on-site, and a team that gets on with the business of getting the job done. We have developed strong ongoing relationships with Yarra Valley Water, South East Water, City West Water, Western Water, Central Highlands Water and Barwon Water through years of providing world class service.

We are experts in constructing infrastructure for sewers including maintenance and testing.

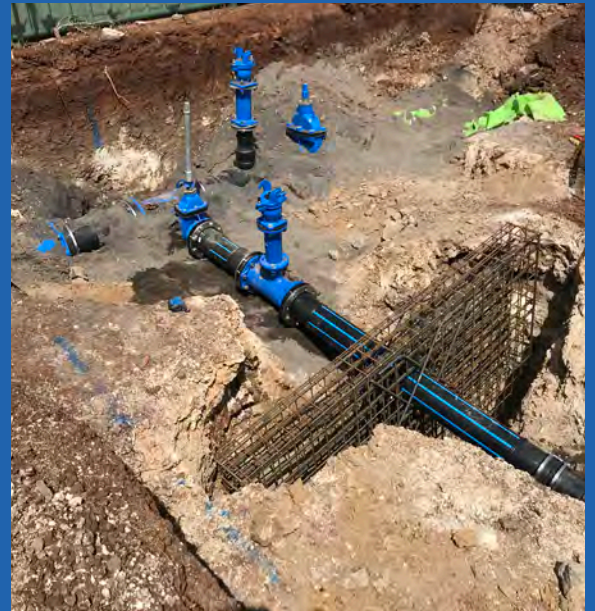
Sewer services include:

- Live Sewer Operations & Confined Space Entry as per MRWA standards
- Gravity Sewer Pipelines (100mm dia. to 1100mm in excess of 7m deep) from wet running sands and silts to hard basalt and granite
- Sewer Rising Mains
- Sewer Pumping Stations
- Construction of Maintenance Holes (In situ and Precast)
- Laser boring (225mm dia. to 1100mm) including grout fill
- Repair of sewer mains
- Timber ring shafts excavation methods
- CCTV inspections as per WSAA standards
- Drain cleaning (100mm dia. to 2200mm)
- Hydro Excavation
- Accredited with all water authorities.





Melbourne's Trusted Sewer, Water & Stormwater Drainage Provider for Complex Civil Projects



Water infrastructure

At Leading Plumbing Solutions, we are a leading supplier of full-service water pipeline installations. We have over 25 years collective plumbing experience offering solutions for complex water projects in greenfields and brownfields sites.

Water services include:

- Water installation for subdivision works
- Asset management for YVW & SEW water networks
- Water transmission mains up to 900mm
- Water treatment plants
- PE butt welding & Electrofusion
- Steel pipe welding and fabrication
- Water installation for brownfields works
- Live water tapins
- Hydrostatic testing
- Water quality testing including chlorination.
- Accredited with all water authorities.
- Licensed Plumbers to perform complex projects



Storm water Infrastructure

Leading Plumbing Solutions provide a comprehensive new pipeline service installing stormwater, using only the latest materials that are to industry code.

We can extend, redirect and relay materials with our expert team, as well as construct pits and access points in the safest positions. We can also dig, lay, and back fill stormwater drains in excess of 8m deep, and excavate in difficult ground conditions. Stormwater services include:

Stormwater services include:

- Stormwater installation for greenfields subdivisions and brownfields sites
- Concrete pipework 225mm – 2200mm
- Box culverts
- Stormwater pits (In situ and Precast) as per Council / VicRoads requirements
- Installation of curved pipework
- Rehabilitation works for stormwater
- Medium density plumbing greenfield subdivisions for sewer, water, stormwater & gas
- Drain cleaning 100mm – 2200mm
- CCTV inspections



Civil Plumbing – Medium Density Projects

At Leading Plumbing Solutions we specialise in civil plumbing services. Our skilled team are both trained and certified in all types of plumbing.

We are experts in constructing infrastructure for medium density and industrial projects for sewer, water, gas, stormwater and fire services.

Plumbing services include -

- Licensed Plumbing team competent to assist in design of sewer, water, gas, storm water as per AS3500
- Sewer construction and testing in Industrial and MD projects
- Construction of hydraulic services including hot & cold water and hydrostatic testing
- Installation of water meter assemblies as per MRWA 500 Series
- Stormwater construction as per AS3500
- Construction of gas services and testing
- Installation of complex meter assemblies as per ESV regulations
- Construction of fire services including hydrants and hose reels
- Construction of trade waste drainage and grease traps
- Live tapin connections





At Leading Solutions we pride ourselves on completing work at exceptional quality no matter how big, or complex it is.

The Leading Solutions Difference

- We have a proven industry reputation and track record
- We are Triple ISO accredited
- We have the latest CCTV and Robot technology to repair and unblock sewer and stormwater pipes with minimal disruption.

24-hour Emergency Support

We have a strong team of emergency plumbers ready to deploy in the case of an emergency. The team is available 24 hours a day, 7 days a week and highly skilled in dealing with critical situations. The Leading Solutions difference means we respond quickly, and effectively to emergency situations to resolve issues quickly and minimise disruptions.

Full Service

Our broadly skilled workmanship allows us to undertake a variety of highly specialised projects. We work across both civil, and industrial work and can simultaneously work on internally and external projects. At Leading Solutions, no job is too big.

Transparency

We take pride in our team of industry-leading plumbers and are dedicated to consistently ensuring the highest level of skill and expertise. This enables us to always provide the Leading Solutions excellent outcome promise. We also provide updates and progress reports to ensure transparency for everyone.

PROJECT	SCOPE OF WORK	CLIENT	
Leading Civil			
	Atwell Branch Sewer – 1.3kms 900 GRP Pipe	Drain Clean, CCTV Inspection and Laser Profiling	Greater Western Water
	Little Springs Branch Sewer – 500m 600 GRP Pipe	Drain Clean, CCTV Inspection and Laser Profiling	Greater Western Water
	Deanside Central Stage 3 – 600m 1200RCP Pipe	Drain Clean, CCTV Inspection	Greater Western Water
Leading Plumbing			
	Mambourin Estate Melbourne Water Stormwater main	Installation of 1500 RCP 1.4kms up to 6m deep	Greater Western Water
	Upgrade of live trade waste system	150m of 250mm Stainless pipe up to 5m deep , AS3500	Lactalis
	Crown Street Sebastapol Sewer reticulation	Installation of 1000m of 150mm sewer, 9 manholes and 89 Lots up to 4m deep	Central Highlands Water

Leading Holdings P/L
13 Tereddan Drive,
Kilsyth South Vic 3137
P: 1300 194 273
W: leadingplumbing.com.au

